

STRATEGIC APPROACH

We are committed to working in collaboration with relevant stakeholders to increase access to healthcare and quality medicines designed to improve people's health within an economically sustainable framework that supports future innovation. As a global healthcare leader operating in more than 100 countries, our aim is to meet the needs of the greatest number of patients worldwide. We have the expertise and the resources to make a real difference and offer a wide range of products and services in both human and animal health.

DRUGS ALONE ARE NOT ENOUGH: OUR INTEGRATED APPROACH TO OPTIMIZE PATIENT OUTCOMES

Over several decades, Sanofi has made a sustained contribution to meeting global health challenges by developing a large portfolio of medicines and vaccines for a wide range of diseases that threaten millions of lives. At the same time, we know that providing health products and services is just one

part of the solution. For this reason, our strategy spans the continuum of care, from prevention to diagnosis and treatment, including disease monitoring and long-term care. Our integrated approach begins with wellness and evolves throughout the patient journey as we seek to continually contribute to the best possible healthcare experience and outcomes. Our expertise enables us to address different aspects of access to healthcare—from innovation to availability, affordability, quality care and patient support.

MORE in our Download Center

• [Access to Healthcare Programs developed by our Affiliates - 2015 factsheet](#)

G4-24 G4-DMA G4-SO1

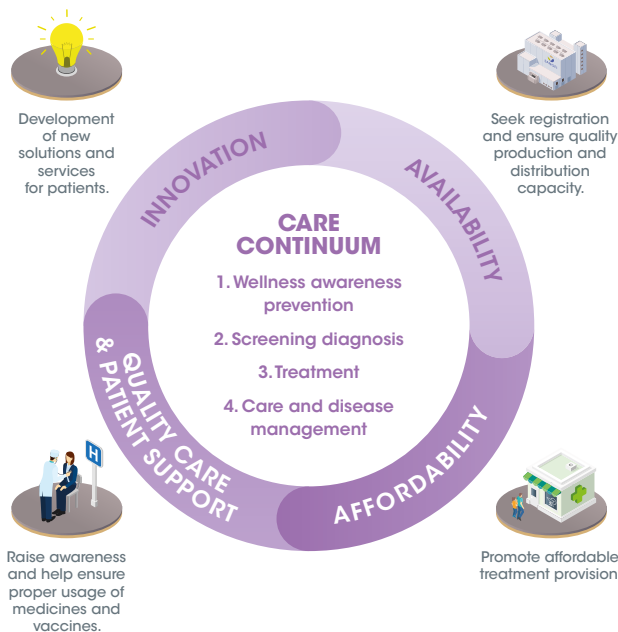
• [Access to Medicines Direction Programs - 2015 factsheet](#)

G4-DMA G4-SO1

• [Access to Healthcare Position Paper](#)

MORE online

• [Sanofi Espoir Foundation website, map of our projects](#)



Facts and figures

18

Number of disease areas⁽¹⁾ in the WHO top 20 list for which we have products or R&D (excluding our generic portfolio)

6 out of 17

Number of Neglected Tropical Diseases⁽²⁾ (NTDs) for which we have products or R&D

(1) Disease areas based on the WHO Global Health Estimates (GHE) 2014: deaths by age, sex and cause.

(2) As defined by the WHO.

More than

55%

PERCENTAGE OF SALES

corresponding to the WHO top 20 list of diseases, Neglected Tropical Diseases and rare diseases

More than

280 ACCESS

TO HEALTHCARE PROGRAMS IN MORE THAN 80 COUNTRIES

More than

325 MILLION PEOPLE

BENEFITED, INCLUDING

Around

56 MILLION PATIENTS

received diagnosis, vaccination, treatment, or disease self-management training

Around

269 MILLION PEOPLE

targeted by awareness campaigns

Around

570,000

HEALTHCARE PROFESSIONALS trained